

Phone  
Fax

**Stratos 80/1-12 CAN PN 6**  
System : High-efficiency pump

**WILO**

Customer

Project

Customer no.

Project no.

Contact

Position no.

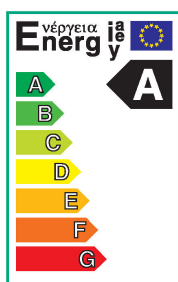
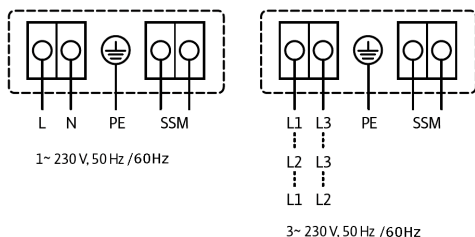
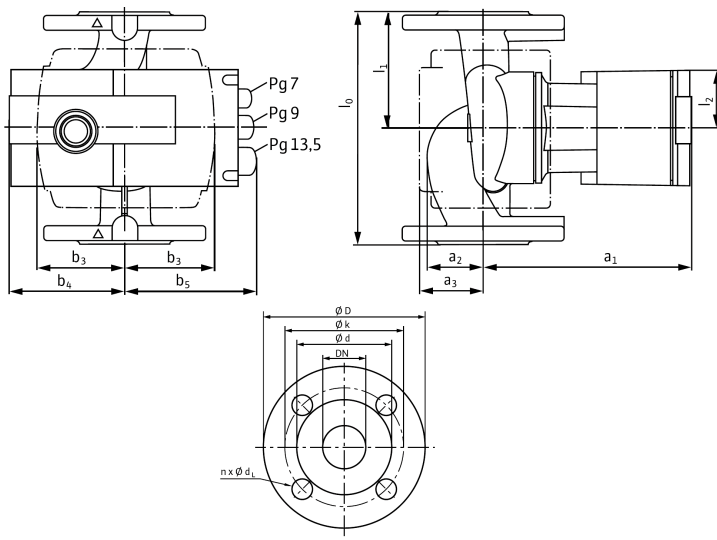
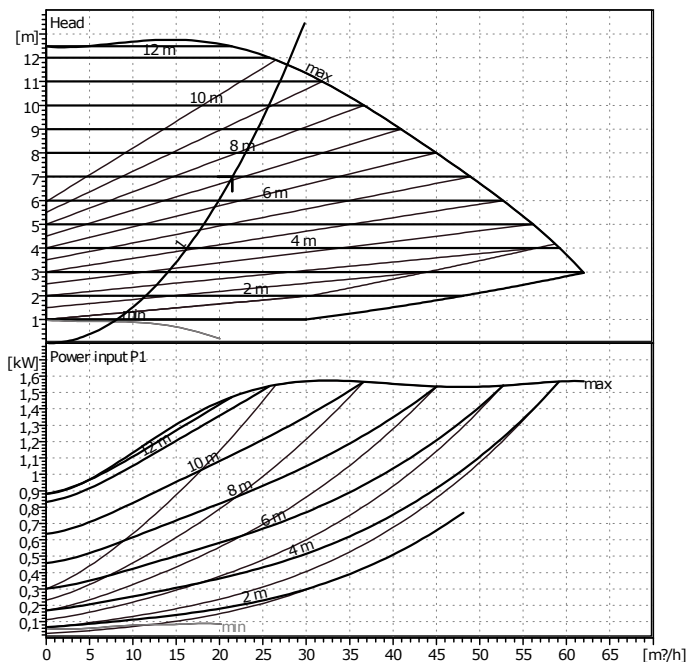
Care of

Location

Date

2011-02-10

Page 1 / 1



**Requested data**

Flow	21,5 m³/h
Head	7 m
Fluid	Water, pure
Fluid temperature	20 °C
Density	0,9982 kg/dm³
Kinematic viscosity	1,001 mm²/s
Vapor pressure	0,1 bar

**Pump data**

Make	WILO
Type	Stratos 80/1-12 CAN PN 6
Pumpe type	Single head pump
Operating type	dp-c
Pressure rating	PN6
Min. fluid temperature	-10 °C
Max. fluid temperature	110 °C

**Hydraulic data (duty point)**

Flow	21,5 m³/h
Head	7 m
Power input P1	0,727 kW

**Minimum suction head**

Temperature	50	95	110			°C
Minimum suction head	7	15	23			m

**Materials / Shaft seal**

Pump housing	EN-GJL 250
Impeller	Fiber-reinforced PP
Shaft	X 46 Cr 13
Bearing	Metal impregnated carbon

**Dimensions per pump**

mm							
a1	329	b5	164	k	150		
a2	90	l0	360	d	132		
a3	114	l1	180	D	200		
b3	127	l2	78	dL	19		
b4	157	n	4				

Suction side	DN 80	/ PN6
Discharge side	DN 80	/ PN6
Weight	33 kg	

**Motordata per Motor/Pump/**

Energy efficiency class	A
Rated power P2	1300 W
Power input P1	1500 W
Nominal speed	3300 1/min
Rated voltage	1~ 230 V, 50 Hz
Max. current	6,8 A
Degree of protection	IP 44
Permitted voltage tolerance +/- 10%	

Item no. of standard version	2087523
------------------------------	---------